

NEW BILLING CODES FOR PLANTAR FASCIA NIGHT SPLINTS, PNEUMATIC AND NON-PNEUMATIC WALKING CASTS

Medicare now differentiates between off-the-shelf and custom fitted type prefabricated AFOs including pneumatic and non-pneumatic walkers and plantar fascia night splints.

Traditionally used codes reflect the custom fitted version and the allowable amounts for both are currently the same. For devices traditionally billed using L4360, L4386 and L4396, new codes reflecting the off-the-shelf definition most likely apply.

Classification Algorithm – Overview of Criteria

Determining Proper Coding of Prefabricated Orthotics

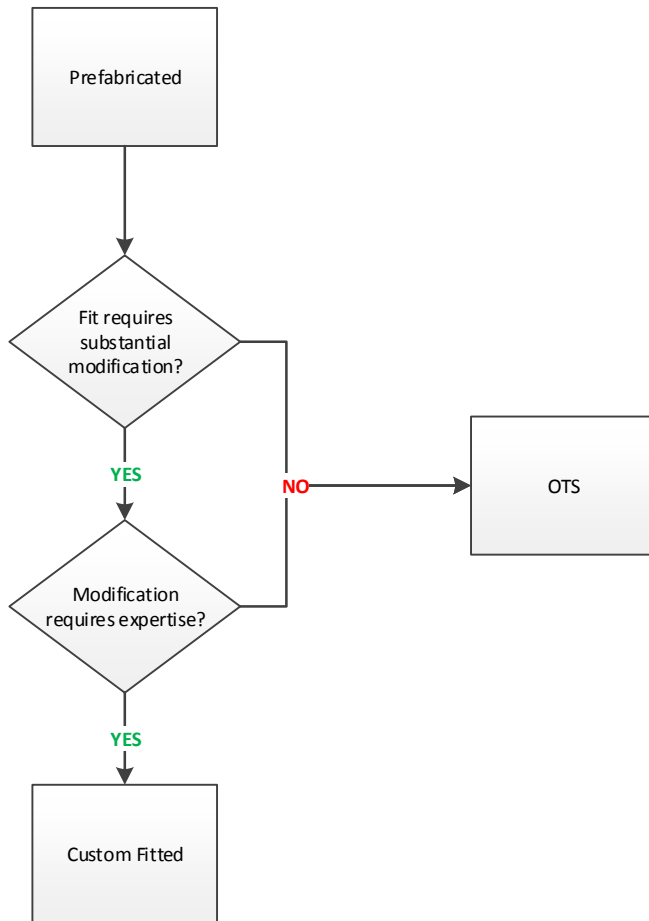
The following question and answer relates to whether a prefabricated orthotic is properly billed using a code for a custom fitted orthotic versus one furnished off-the-shelf and does not address medical necessity for the item. The descriptors for the HCPCS codes for custom fitted orthotics include the following nomenclature:

- Off-the-shelf (OTS) - Prefabricated item that requires minimal self-adjustment such as being trimmed, bent, molded, assembled, or otherwise adjusted to fit the beneficiary. Minimal self-adjustment does not require the expertise of a certified orthotist or an individual with equivalent expertise.

- Custom fitted - Prefabricated item that requires substantial modification e.g., has been trimmed, bent, molded, assembled, or otherwise customized to fit a specific patient by certified orthotist or an individual with equivalent expertise. Question: Is the prefabricated orthotic furnished with custom fitting that is and can only be provided by an individual with expertise or furnished off-the-shelf (OTS)?

Classification depends on (1) what must be done at final fitting and (2) who must do it. Expertise of a qualified practitioner and substantial modification at the time of delivery qualify the items for classification as custom fitted. Fail either one of these criteria and the item is classified as off-the-shelf.

How to Decide What Code Type for Prefabricated Orthotic



Classification Algorithm:

http://downloads.cms.gov/medicare-coverage-database/lcd_attachments/11517_66/Classification_AlgorithmOverview_of_Criteria.pdf

L4360	WALKING BOOT, PNEUMATIC AND/OR VACUUM, WITH OR WITHOUT JOINTS, WITH OR WITHOUT INTERFACE MATERIAL, PREFABRICATED ITEM THAT HAS BEEN TRIMMED, BENT, MOLDED, ASSEMBLED, OR OTHERWISE CUSTOMIZED TO FIT A SPECIFIC PATIENT BY AN INDIVIDUAL WITH EXPERTISE
L4361	WALKING BOOT, PNEUMATIC AND/OR VACUUM, WITH OR WITHOUT JOINTS, WITH OR WITHOUT INTERFACE MATERIAL, PREFABRICATED, OFF-THE-SHELF
L4386	WALKING BOOT, NON-PNEUMATIC, WITH OR WITHOUT JOINTS, WITH OR WITHOUT INTERFACE MATERIAL, PREFABRICATED ITEM THAT HAS BEEN TRIMMED, BENT, MOLDED, ASSEMBLED, OR OTHERWISE CUSTOMIZED TO FIT A SPECIFIC PATIENT BY AN INDIVIDUAL WITH EXPERTISE
L4387	WALKING BOOT, NON-PNEUMATIC, WITH OR WITHOUT JOINTS, WITH OR WITHOUT INTERFACE MATERIAL, PREFABRICATED, OFF-THE-SHELF
L4396	STATIC OR DYNAMIC ANKLE FOOT ORTHOSIS, INCLUDING SOFT INTERFACE MATERIAL, ADJUSTABLE FOR FIT, FOR POSITIONING, MAY BE USED FOR MINIMAL AMBULATION, PREFABRICATED ITEM THAT HAS BEEN TRIMMED, BENT, MOLDED, ASSEMBLED, OR OTHERWISE CUSTOMIZED TO FIT A SPECIFIC PATIENT BY AN INDIVIDUAL WITH EXPERTISE
L4397	STATIC OR DYNAMIC ANKLE FOOT ORTHOSIS, INCLUDING SOFT INTERFACE MATERIAL, ADJUSTABLE FOR FIT, FOR POSITIONING, MAY BE USED FOR MINIMAL AMBULATION, PREFABRICATED, OFF-THE-SHELF

Local Coverage Article for AFOs, Effective January 2014

[http://www.cms.gov/medicare-coverage-database/details/article-details.aspx?articleId=19885&ver=45&ContrId=140&ContrVer=2&LCDId=11517&CntrctrSelected=140*2&Cntrctr=140&name=CGS+Administrators%2c+LLC+\(18003%2c+DME+MAC\)&DocType=Active&LCntrctr=140*2&IsPopup=y&](http://www.cms.gov/medicare-coverage-database/details/article-details.aspx?articleId=19885&ver=45&ContrId=140&ContrVer=2&LCDId=11517&CntrctrSelected=140*2&Cntrctr=140&name=CGS+Administrators%2c+LLC+(18003%2c+DME+MAC)&DocType=Active&LCntrctr=140*2&IsPopup=y&)

Medicare allowables remain the same regardless of whether these prefabricated items are “customized” or “off-the-shelf”.

		Ceiling	Floor
L4360	Pneumat walking boot pre cst	\$330.41	\$247.81
L4361	Pneuma/vac walk boot pre ots	\$330.41	\$247.81
L4386	Non-pneum walk boot pre cst	\$180.76	\$135.57
L4387	Non-pneum walk boot pre ots	\$180.76	\$135.57
L4396	Static or dynami afo pre customized	\$190.99	\$143.24
L4397	Static or dynami afo pre off-the-shelf	\$190.99	\$143.24